

ÉLÉMENTS LOGIQUES & DISTRIBUTEURS SPÉCIAUX

Éléments logiques | Logic elements

- Large gamme
Wide range
- Petites dimensions
Small dimensions
- Possibilité de montage sur équerre
Mountable on bracket
- Raccord M5 ou raccord instantané pour tube Ø4
M5 threaded ports or push-in fittings for Ø4 tube

Diamètre nominal <i>Nominal orifice</i>	2,5 mm
Débit nominal à 6 bar <i>Nominal flow rate at 6 bar</i>	100 NL/min
Température de travail <i>Temperature range</i>	max +60°C
Pression de travail <i>Working pressure</i>	2 ... 10 bar 0.2 ... 1 MPa
Fluide <i>Fluid</i>	air filtré 50µ avec ou sans lubrification 50µ filtered lubricated or non lubricated air

Matériaux

Corps : Aluminium anodisé
Resorts : Inox
Joints : NBR
Parties internes : Laiton OT58

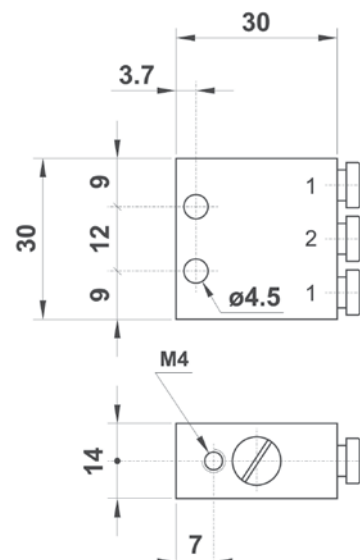
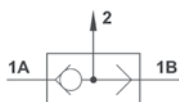
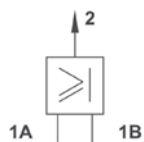
Materials

Body : Aluminium 11S
Springs : Stainless steel
Seals : NBR
Internal parts : Brass OT58

08.021.4

CELLULE "OU"

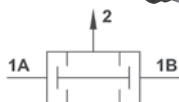
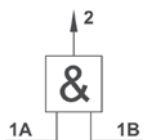
raccords instantanés pour tube de Ø4
possibilité de montage sur équerre
OR element, push-in fittings for Ø4 tube mountable on bracket



08.025.4

CELLULE "ET"

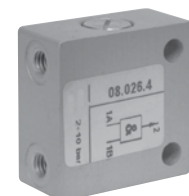
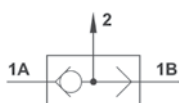
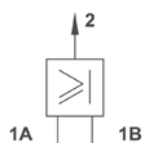
raccords instantanés pour tube de Ø4
possibilité de montage sur équerre
AND element, push-in fittings for Ø4 tube mountable on bracket



08.022.4

CELLULE "OU"

raccordement M5
OR element M5 threaded ports

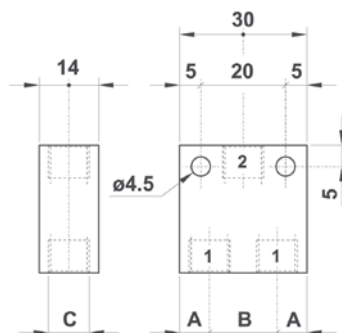
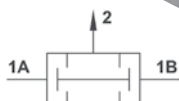
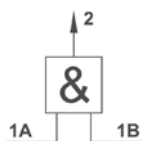


Modèle <i>Model</i>	A	B	C
08.022.4	5.2	19.6	M5
08.026.4	5.2	19.6	M5

08.026.4

CELLULE "ET"

raccordement M5
AND element M5 threaded ports

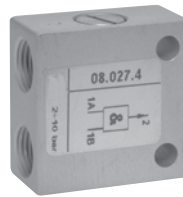
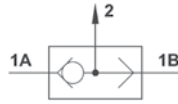
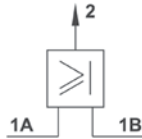


ÉLÉMENTS LOGIQUES & DISTRIBUTEURS SPÉCIAUX

Éléments logiques | Logic elements

08.023.4

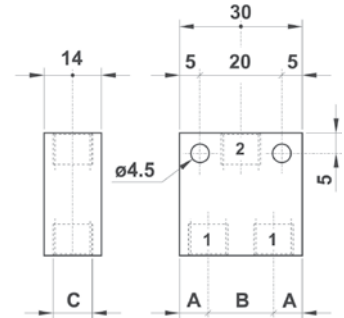
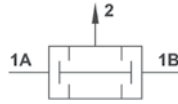
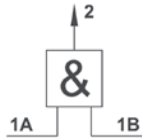
CELLULE "OU"
raccordement G1/8"
OR element
G1/8" threaded ports



Modèle Model	A	B	C
08.023.4	7	16	G1/8"
08.027.4	7	16	G1/8"

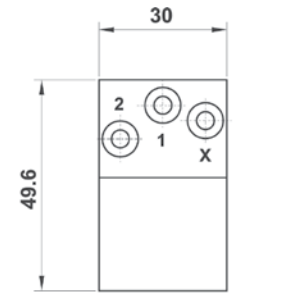
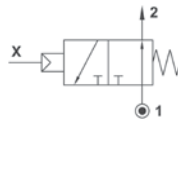
08.027.4

CELLULE "ET"
raccordement G1/8"
AND element
G1/8" threaded ports



08.039.4

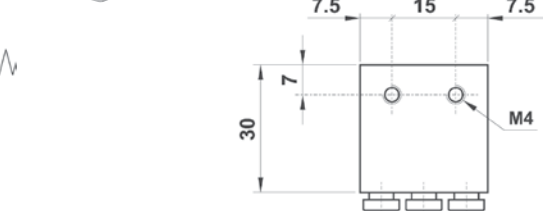
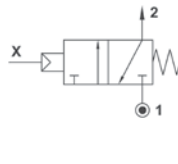
CELLULE "NON"
raccords instantanés pour tube Ø4
possibilité de montage sur équerre
NOT element, push-in fittings for Ø4 tube
mountable on bracket



Version Atex 2GD T6 : 08.039.4.ATEX
Pression de commande quand pression réseau = 6 bar : 1,2 bar

08.049.4

CELLULE "OUI"
raccords instantanés pour tube Ø4
possibilité de montage sur équerre
YES element, push-in fittings for Ø4 tube
mountable on bracket

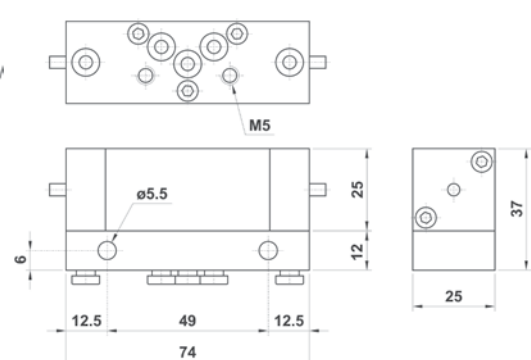
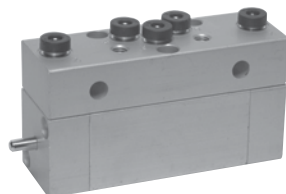
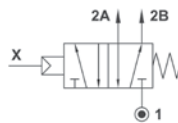


Version Atex 2GD T6 : 08.049.4.ATEX
Pression de commande quand pression réseau = 6 bar : 1 bar

04.003.4

MÉMOIRE monostable
raccords instantanés pour tube de Ø4
Monostable MEMORY element
push-in fittings for Ø4 tube

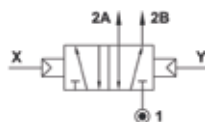
Version Atex 2GD T6 : 04.003.4.ATEX



04.002.4

MÉMOIRE bistable
raccords instantanés pour tube de Ø4
Bistable MEMORY element
push-in fittings for Ø4 tube

Version Atex 2GD T6 : 04.002.4.ATEX

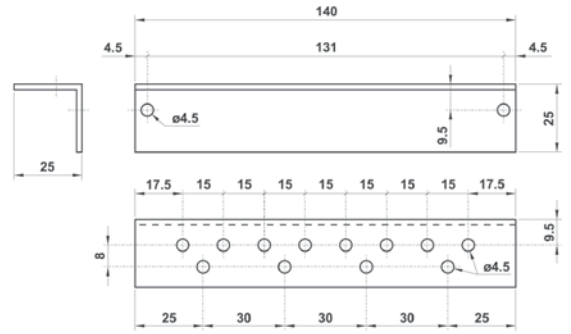


ÉLÉMENTS LOGIQUES & DISTRIBUTEURS SPÉCIAUX

Éléments logiques | Logic elements

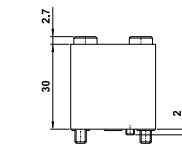
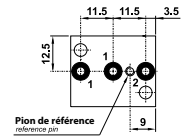
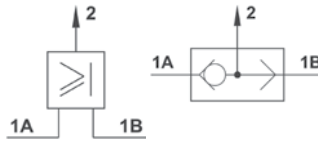
08.092.1

Équerre support des éléments logiques
Mounting bracket for logic elements



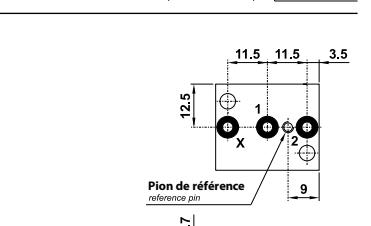
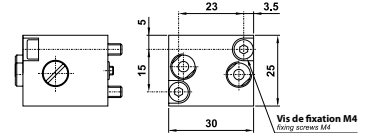
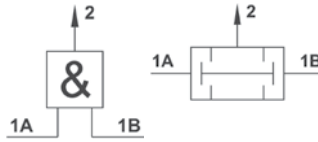
08.296.4

CELLULE "OU" CR
montage sur embase
OR element
for assembling on sub-base



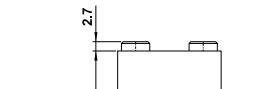
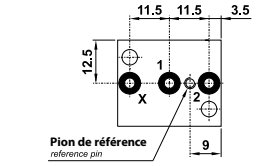
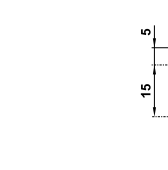
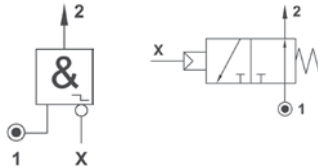
08.297.4

CELLULE "ET" CR
montage sur embase
AND element
for assembling on sub-base



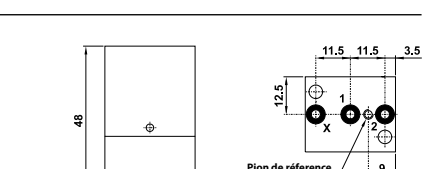
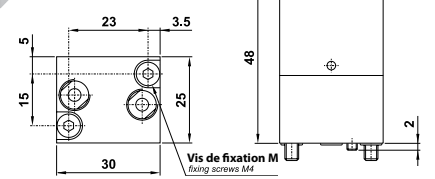
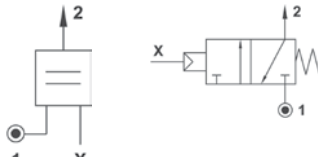
08.298.4

CELLULE "NON" CR
montage sur embase
NOT element
for assembling on sub-base



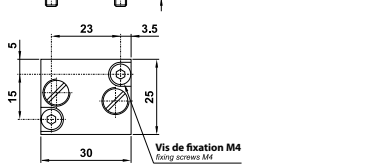
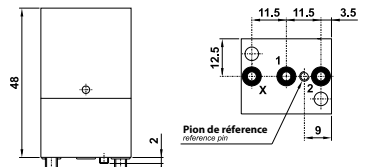
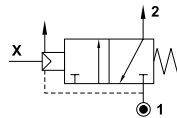
08.299.4

CELLULE "OUI" CR
montage sur embase
YES element
for assembling on sub-base



08.300.4

Capteur de fuite positif CR pour montage sur embase
Switch with inhibition exhaust, for assembling on sub-base



Quand la sortie X (fuite) est bouchée
le distributeur commute l'entrée 1 vers la sortie 2
When exhaust is inhibited, the valve switches and air goes
out from exit port 2.

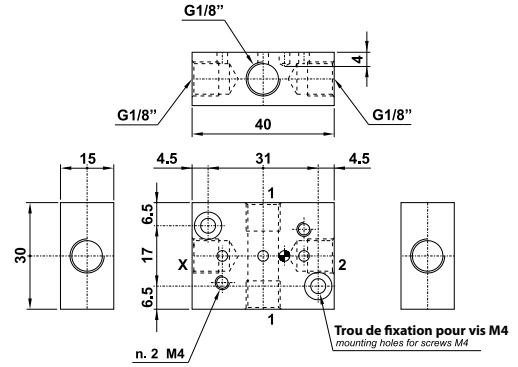
ÉLÉMENTS LOGIQUES & DISTRIBUTEURS SPÉCIAUX

Éléments logiques pour interface | Logic elements for interface

AQ.015.1

Embase simple pour le montage
des éléments logiques CR

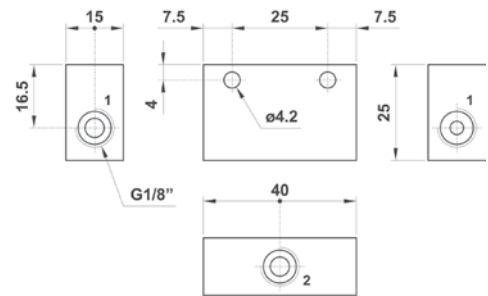
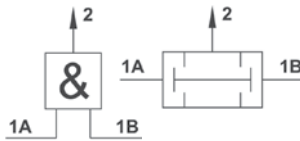
Single sub-base for assembling of CR logic elements



08.121.4

CELLULE "ET" en ligne
raccordement G1/8"

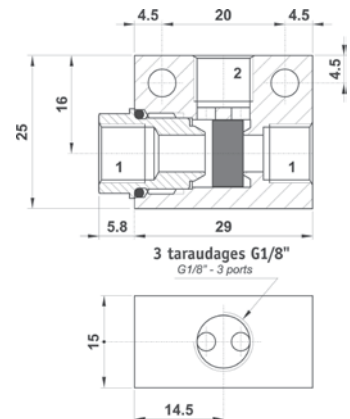
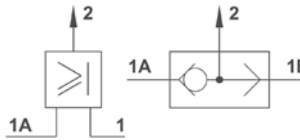
In-line OR logic element



08.133.4

CELLULE "OU" en ligne
raccordement G1/8"

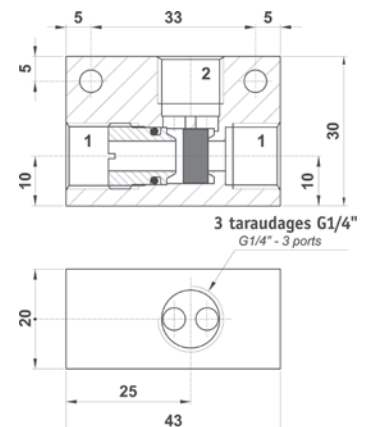
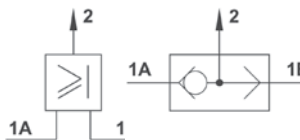
In-line OR logic element



08.127.4

CELLULE "OU" en ligne
raccordement G1/4"

In-line OR logic element

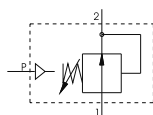


Raccord <i>Ports</i>	G1/8"
Débit à 6 bar avec $\Delta p = 1$ <i>Nominal flow rate at 6 bar with $\Delta p = 1$</i>	650 NL/min
Température de travail <i>Temperature range</i>	-5 à +50°C
Pression de travail <i>Working pressure</i>	maxi 10 bar 0.2 ... 1 MPa
Fluide <i>Fluid</i>	air filtré et lubrifié ou non <i>air filtered and lubricated or not</i>
Plage de réglage de la pression <i>Pressure adjustment range</i>	1 à 4 bar

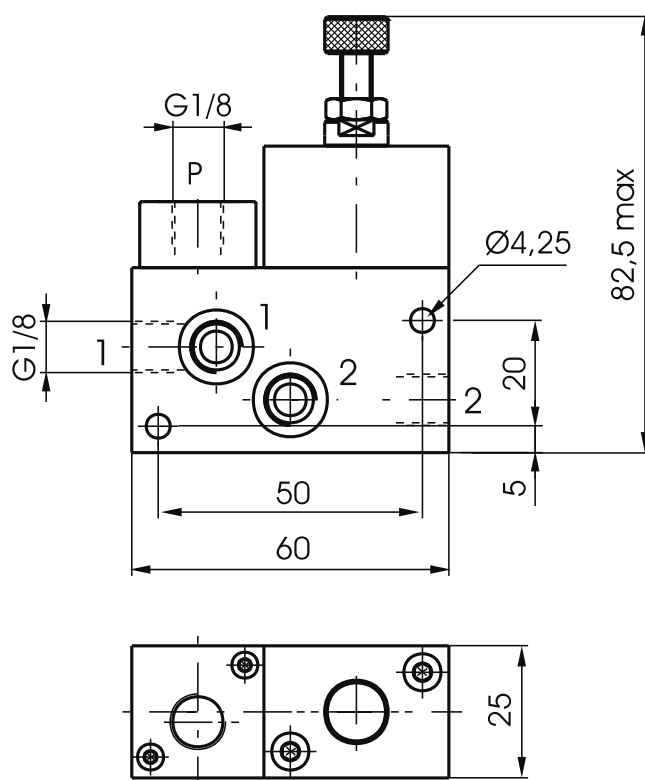
IPP18P

Dispositif basse et haute pression
avec commande pneumatique

Poids : 240 grs



1 = Entrée / manomètre
2 = Sortie / manomètre
P = Pilotage



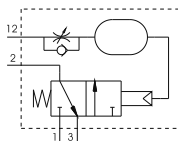
Éléments logiques & distributeurs spéciaux

Éléments logiques | Logic elements

Raccord Ports	G1/8"	
Débit à 6 bar avec $\Delta p = 1$ Nominal flow rate at 6 bar with $\Delta p = 1$	130 NL/min	
Température de travail Temperature range	-5 à +70°C	
Pression de travail Working pressure	NF	NO
	de 3 à 10 bar 0.4 ... 1 MPa	de 4 à 10 bar 0.4 ... 1 MPa
Fluide Fluid	air filtré et lubrifié ou non air filtered and lubricated or not	
Diamètre nominal de passage Nominal diameter	2,5 bar	

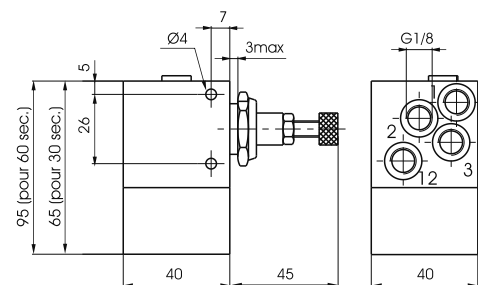
IT18NF.30

Temporisation pneumatique
Normalement Fermée
de 0 à 30 sec.



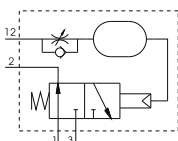
IT18NF.60

Temporisation pneumatique
Normalement Fermée
de 0 à 60 sec.



IT18NO.30

Temporisation pneumatique
Normalement Ouvert
de 0 à 30 sec.



IT18NO.60

Temporisation pneumatique
Normalement Ouvert
de 0 à 60 sec.

