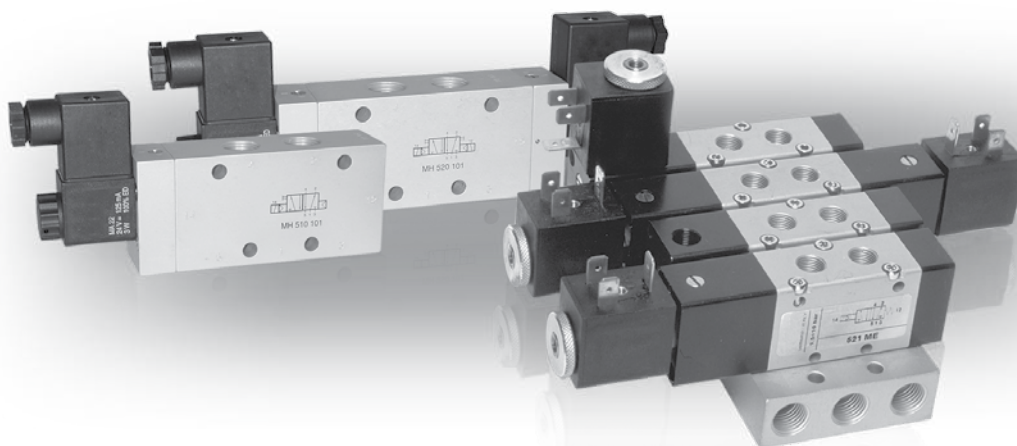


# GAMME STANDARD

## Électrodistributeurs

Solenoid actuated valves



### INFORMATIONS GÉNÉRALES GENERAL INFORMATION

- Électrodistributeurs 3/2 - 5/2 - 5/3 avec raccord G1/8" - G1/4" - G3/8" - G1/2"  
*3/2 - 5/2 - 5/3 spool valves with G1/8" - G1/4" G3/8" - G1/2" threaded ports*
- Montage en ligne sur embases monobloc ou associables (Voir embases p.136 à 141)  
*Installation in-line, on gang or modular manifolds*
- Commande électrique à action manuelle bistable  
*Solenoid pilots with detented manual override as standard*
- Version basse puissance 1.5W sur demande  
*On request with low consumption 1.5W*
- Versions spéciales sur demande  
*Special versions on request*

#### Temps de réponse - Response times

	G1/8"	G1/4"	G1/2"
Monostable <i>Monostable</i>	TRA (14) : 15 ms TRR (12) : 35 ms	TRA (14) : 19 ms TRR (12) : 45 ms	TRA (14) : 13 ms TRR (12) : 26 ms
Bistable <i>Bistable</i>	TRA (14) : 20ms TRR (12) : 20ms	TRA (14) : 22 ms TRR (12) : 22ms	TRA (14) : 24ms TRR (12) : 24ms

#### Matériaux

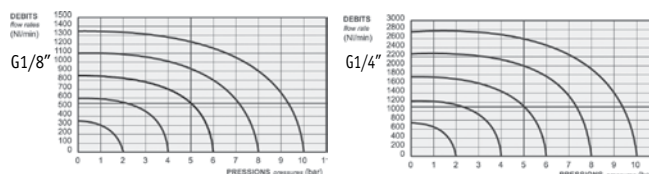
Corps : Aluminium anodisé  
Ressorts : Inox  
Joint : NBR  
Tiroir : Aluminium nickelé  
Parties internes : Laiton OT58

#### Materials

Body : Aluminium 11S  
Springs : Stainless steel  
Seals : NBR  
Spool : Nickel plated aluminium  
Internal parts : Brass OT58

#### Débit nominal à 6 bar

G1/8" : 550 NL/min      G1/4" : 1100 NL/min  
G3/8" : 2250 NL/min      G1/2" : 4600 NL/min



Les produits suivants sont vendus sans bobine ; elles sont vendues séparément (voir chapitre 5).

*The following listed products are sold without coils, which are bought separately (refer to chapter 5).*

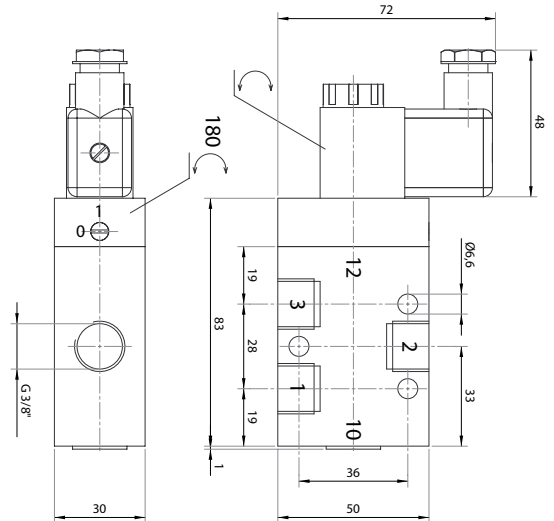
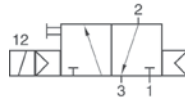
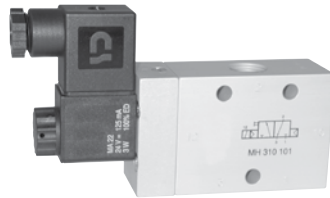
Diamètre nominal <i>Nominal orifice</i>	G1/8" : 5 mm - G 1/4" : 7.5 mm G3/8" : 10mm - G1/2" : 13mm		
Echelle de température <i>Temperature range</i>	max +60°C		
Pression de travail <i>Working pressure</i>	al. interne monost. <i>[monost. internal air supply]</i>	al. interne bist. <i>[bistable internal air supply]</i>	alim. séparée <i>[separate air supply]</i>
	2.5 ... 10 bar 0.25 ... 1 MPa	1 ... 10 bar 0.1 ... 1 MPa	max 10 bar max 1 MPa
Pression exercée (avec alimentation séparée) <i>Actuating pressure (for separate air supply)</i>	monostable <i>[monostable]</i>		bistable <i>[bistable]</i>
	2.5 ... 10 bar 0.25 ... 1 MPa		1 ... 10 bar 0.1 ... 1 MPa
Fluide <i>Fluid</i>	air filtré 50µ avec ou sans lubrification 50µ filtered lubricated or non lubricated air		

# GAMME STANDARD

## Électrodistribeurs G3/8" | Solenoid actuated valves

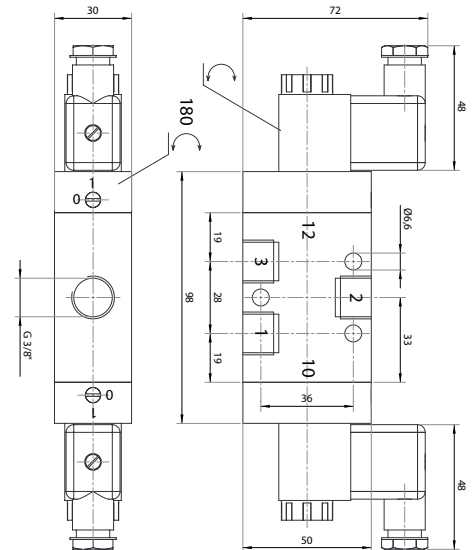
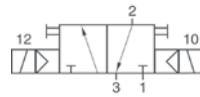
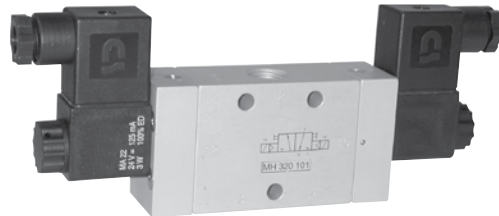
### MH 310 101

Électrodistribeur 3/2 NF monostable  
 rappel ressort pneumatique  
 raccordement G3/8"  
 3/2 NC solenoid pilot  
 air spring  
 G3/8"



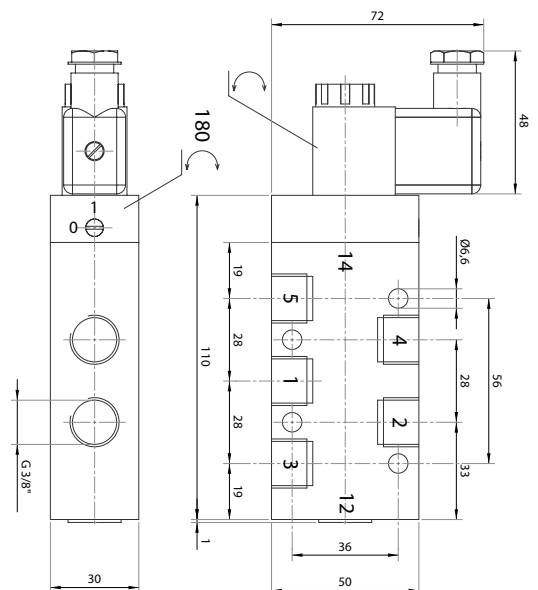
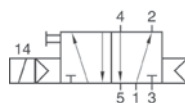
### MH 320 101

Électrodistribeur 3/2 bistable  
 raccordement G3/8"  
 3/2 solenoid pilot  
 G3/8"



### MH 510 101

Électrodistribeur 5/2 monostable  
 rappel ressort pneumatique  
 raccordement G3/8"  
 5/2 solenoid pilot  
 air spring  
 G3/8"

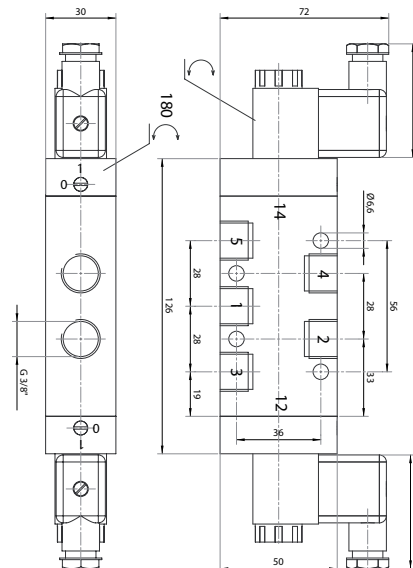
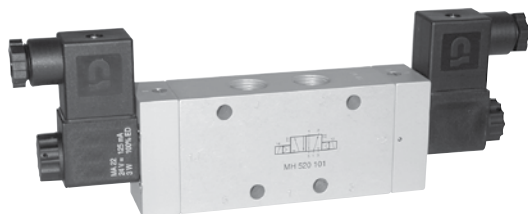
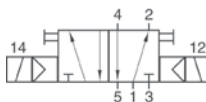


# GAMME STANDARD

## Électro distributeurs G3/8" | Solenoid actuated valves

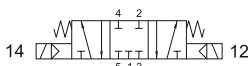
### MH 520 101

Électro distributeur 5/2 bistable  
raccordement G3/8"  
5/2 solenoid pilot  
G3/8"



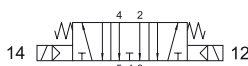
### MH 531 101

Centre fermé  
*Closed center*



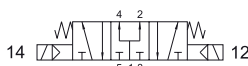
### MH 522 101

Centre ouvert  
*Open center*



### MH 533 101

Centre en pression  
*Pressurized center*



Électro distributeur 5/3  
raccordement G3/8"  
5/3 solenoid pilot  
G3/8"

