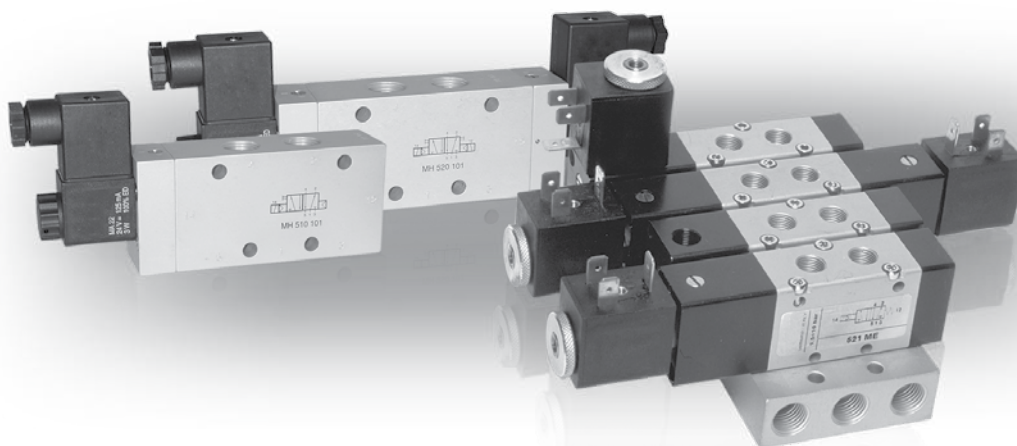


# GAMME STANDARD

## Électrodistributeurs

Solenoid actuated valves



### INFORMATIONS GÉNÉRALES GENERAL INFORMATION

- Électrodistributeurs 3/2 - 5/2 - 5/3 avec raccord G1/8" - G1/4" - G3/8" - G1/2"  
*3/2 - 5/2 - 5/3 spool valves with G1/8" - G1/4" G3/8" - G1/2" threaded ports*
- Montage en ligne sur embases monobloc ou associables (Voir embases p.136 à 141)  
*Installation in-line, on gang or modular manifolds*
- Commande électrique à action manuelle bistable  
*Solenoid pilots with detented manual override as standard*
- Version basse puissance 1.5W sur demande  
*On request with low consumption 1.5W*
- Versions spéciales sur demande  
*Special versions on request*

#### Temps de réponse - Response times

	G1/8"	G1/4"	G1/2"
Monostable <i>Monostable</i>	TRA (14) : 15 ms TRR (12) : 35 ms	TRA (14) : 19 ms TRR (12) : 45 ms	TRA (14) : 13 ms TRR (12) : 26 ms
Bistable <i>Bistable</i>	TRA (14) : 20ms TRR (12) : 20ms	TRA (14) : 22 ms TRR (12) : 22ms	TRA (14) : 24ms TRR (12) : 24ms

#### Matériaux

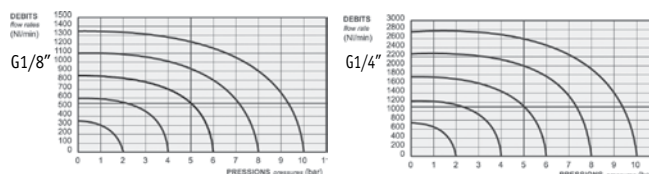
Corps : Aluminium anodisé  
Ressorts : Inox  
Joint : NBR  
Tiroir : Aluminium nickelé  
Parties internes : Laiton OT58

#### Materials

Body : Aluminium 11S  
Springs : Stainless steel  
Seals : NBR  
Spool : Nickel plated aluminium  
Internal parts : Brass OT58

#### Débit nominal à 6 bar

G1/8" : 850 NL/min      G1/4" : 1700 NL/min  
G3/8" : 2250 NL/min      G1/2" : 4600 NL/min



Les produits suivants sont vendus sans bobine ; elles sont vendues séparément (voir chapitre 5).

*The following listed products are sold without coils, which are bought separately (refer to chapter 5).*

Diamètre nominal <i>Nominal orifice</i>	G1/8" : 5 mm - G 1/4" : 7.5 mm G3/8" : 10mm - G1/2" : 13mm		
Echelle de température <i>Temperature range</i>	max +60°C		
Pression de travail <i>Working pressure</i>	al. interne monost. <i>[monost. internal air supply]</i>	al. interne bist. <i>[bistable internal air supply]</i>	alim. séparée <i>[separate air supply]</i>
	2.5 ... 10 bar 0.25 ... 1 MPa	1 ... 10 bar 0.1 ... 1 MPa	max 10 bar max 1 MPa
Pression exercée (avec alimentation séparée) <i>Actuating pressure (for separate air supply)</i>	monostable <i>[monostable]</i>		bistable <i>[bistable]</i>
	2.5 ... 10 bar 0.25 ... 1 MPa		1 ... 10 bar 0.1 ... 1 MPa
Fluide <i>Fluid</i>	air filtré 50µ avec ou sans lubrification 50µ filtered lubricated or non lubricated air		

# GAMME STANDARD

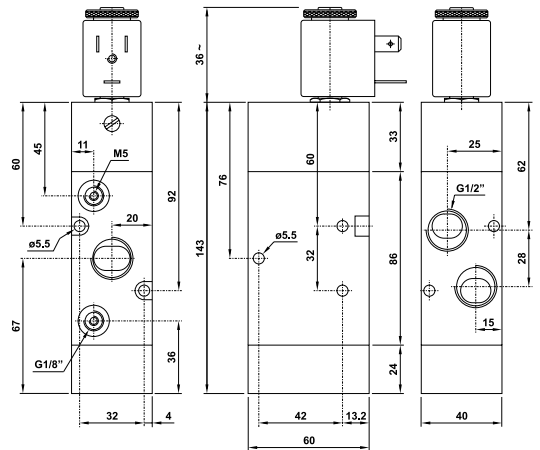
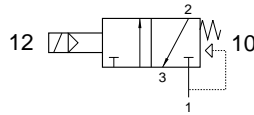
## Électrodistribeurs G1/2" |

Solenoid actuated valves

### 324 ME

Électrodistribeur 3/2 NF monostable  
rappel à combinaison de ressort  
raccordement G1/2"  
3/2 NC solenoid pilot  
spring return  
G1/2"

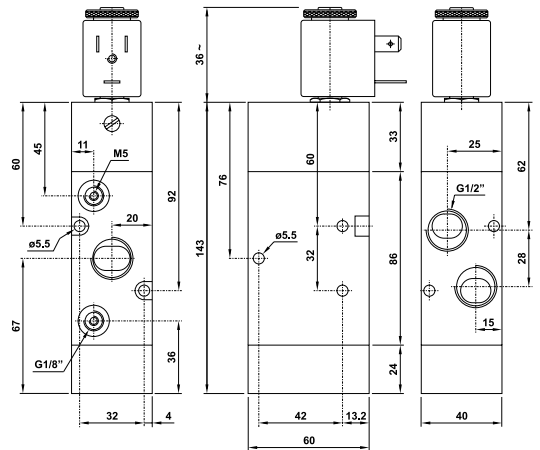
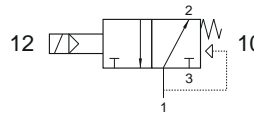
Version Atex 2GD T6 : 324ME.ATEX



### 324 MEA

Électrodistribeur 3/2 NO monostable  
rappel à combinaison de ressort  
raccordement G1/2"  
3/2 NO solenoid pilot  
spring return  
G1/2"

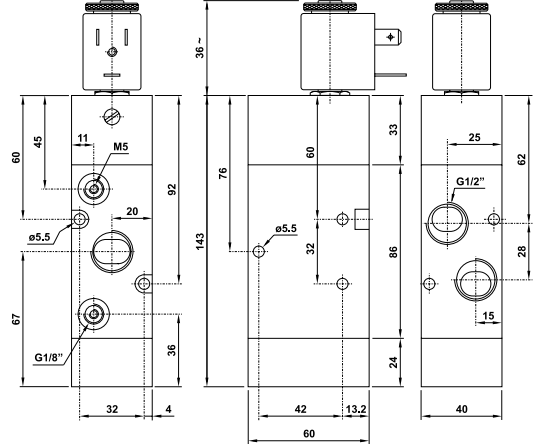
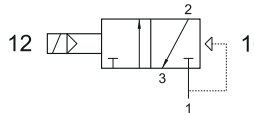
Version Atex 2GD T6 : 324MEA.ATEX



### 324 EFP

Électrodistribeur 3/2 NF monostable  
rappel ressort pneumatique  
raccordement G1/2"  
3/2 NC solenoid pilot  
pneumatic spring return  
G1/2"

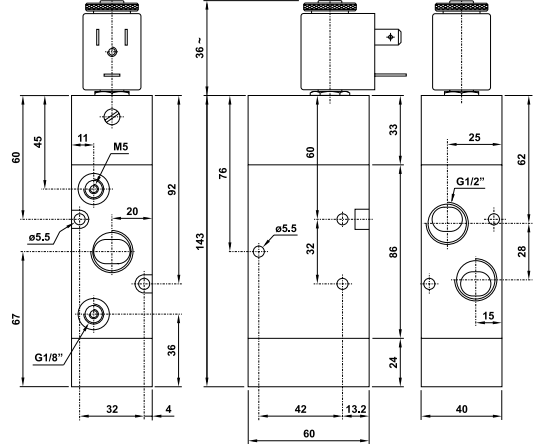
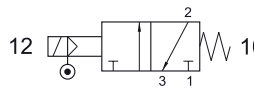
Version Atex 2GD T6 : 324EFP.ATEX



### 324 ME AS

Électrodistribeur 3/2 NF monostable  
rappel ressort mécanique  
assistance pneumatique externe  
raccordement G1/2"  
3/2 solenoid pilot with separate air supply  
spring return  
G1/2"

Version Atex 2GD T6 : 324MEAS.ATEX



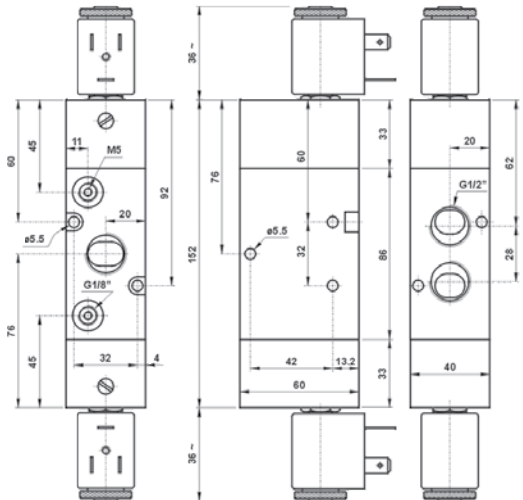
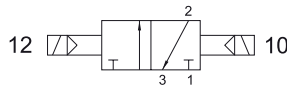
# GAMME STANDARD

## Électro distributeurs G1/2" | Solenoid actuated valves

### 324 EE

Électro distributeur 3/2 bistable  
raccordement G1/2"  
3/2 double solenoid pilot  
G1/2"

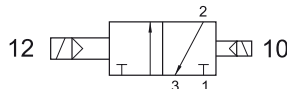
Version Atex 2GD T6 : 324EE.ATEX



### 324 EED

Électro distributeur 3/2 bistable différentiel  
raccordement G1/2"  
3/2 double solenoid pilot with differential  
G1/2"

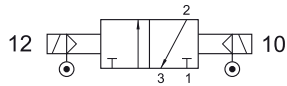
Version Atex 2GD T6 : 324EED.ATEX



### 324 EE AS

Électro distributeur 3/2 bistable  
assistance pneumatique externe  
raccordement G1/2"  
3/2 double solenoid pilot  
with separate air supply  
G1/2"

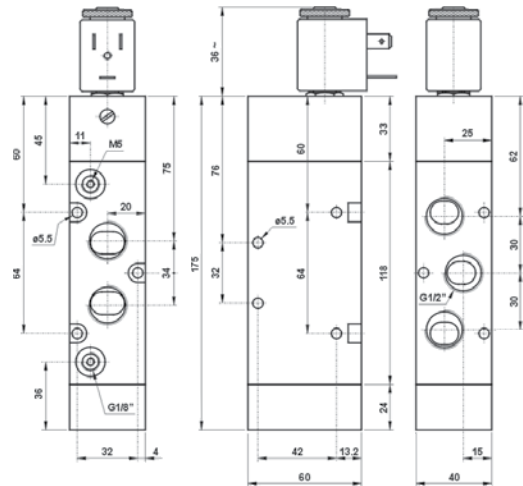
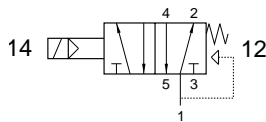
Version Atex 2GD T6 : 324EEAS.ATEX



### 524 ME

Électro distributeur 5/2 monostable  
rappel à combinaison de ressort  
raccordement G1/2"  
5/2 solenoid pilot  
spring return  
G1/2"

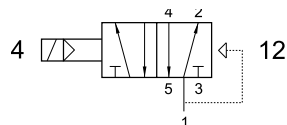
Version Atex 2GD T6 : 524ME.ATEX



### 524 EFP

Électro distributeur 5/2 monostable  
rappel ressort pneumatique  
raccordement G1/2"  
5/2 solenoid pilot pneumatic  
spring return  
G1/2"

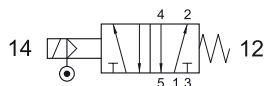
Version Atex 2GD T6 : 524EFP.ATEX



### 524 ME AS

Électro distributeur 5/2 monostable  
rappel ressort mécanique  
assistance pneumatique externe  
raccordement G1/2"  
5/2 solenoid pilot with separate air supply  
spring return  
G1/2"

Version Atex 2GD T6 : 524MEAS.ATEX



# GAMME STANDARD

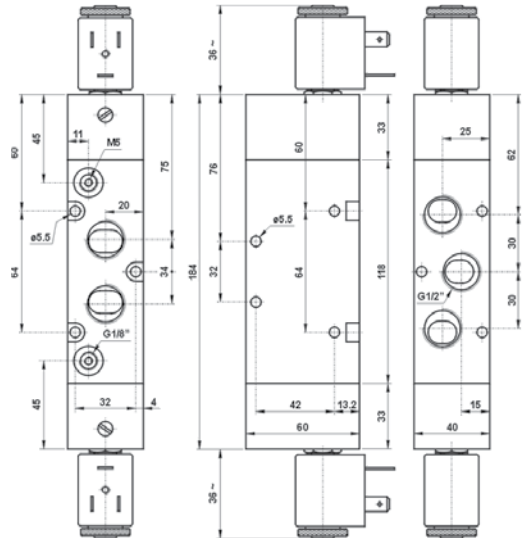
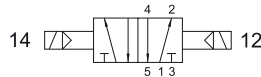
## Électrodistribeurs G1/2" |

Solenoid actuated valves

### 524 EE

Électrodistribeur 5/2 bistable  
raccordement G1/2"  
5/2 double solenoid pilot  
G1/2"

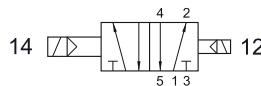
Version Atex 2GD T6 : 524EE.ATEX



### 524 EED

Électrodistribeur 5/2 bistable différentiel  
raccordement G1/2"  
5/2 double solenoid pilot  
with differential  
G1/2"

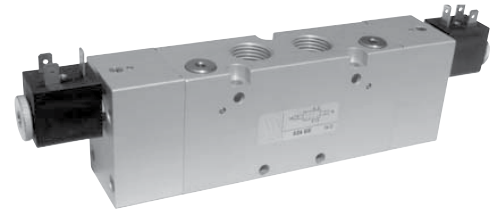
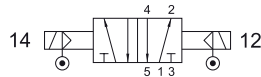
Version Atex 2GD T6 : 524EED.ATEX



### 524 EE AS

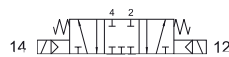
Électrodistribeur 5/2 bistable  
assistance pneumatique externe  
raccordement G1/2"  
5/2 double solenoid pilot  
with separate air supply  
G1/2"

Version Atex 2GD T6 : 524EEAS.ATEX



### 5243C EE

Centre fermé  
Closed center



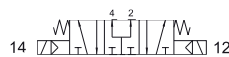
### 5243A EE

Centre ouvert  
Open center



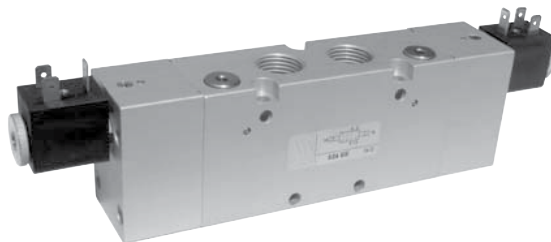
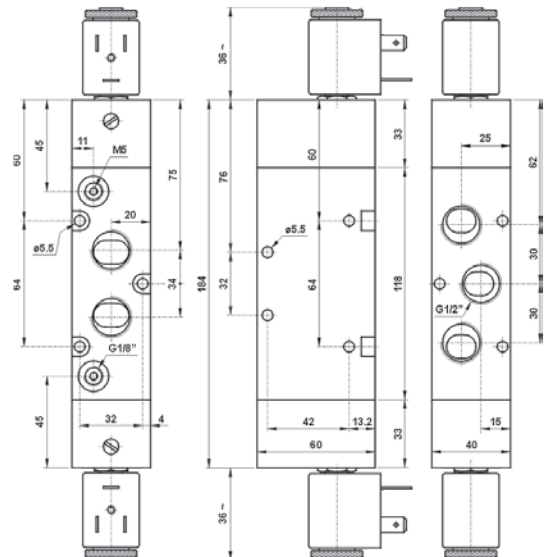
### 5243P EE

Centre en pression  
Pressurized center



Électrodistribeur 5/3  
raccordement G1/2"  
5/3 double solenoid pilot  
G1/2"

Version Atex 2GD T6 : 5243\*EE.ATEX

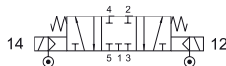


# GAMME STANDARD

## Électro distributeurs G1/2" | Solenoid actuated valves

**5243C EE AS**

Centre fermé  
*Closed center*



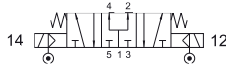
**5243A EE AS**

Centre ouvert  
*Open center*



**5243P EE AS**

Centre en pression  
*Pressurized center*



Électro distributeur 5/3  
assistance pneumatique externe  
raccordement G1/2"  
5/3 double solenoid pilot  
with separate air supply  
G1/2"

Version Atex 2GD T6 : 5243\*EEAS.ATEX

