

INFORMATIONS GÉNÉRALES GENERAL INFORMATION

- Distributeurs 5/2 - 5/3
5/2 - 5/3 spool valves
- Montage sur embase modulaire
Installation on multiple sub-bases
- Commande manuelle bistable sur l'électropilote
Detented manual override on the solenoid pilot

Matériaux

Corps : Aluminium anodisé
Ressorts : Inox
Joints : NBR
Tiroir : Aluminium nickelé
Parties internes : Laiton OT58

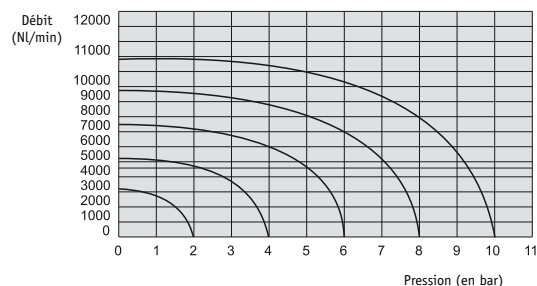
Materials

Body : Aluminium 11S
Springs : Stainless steel
Seals : NBR
Spool : Nickel plated aluminium
Internal parts : Brass OT58

Les produits de cette série sont vendus sans bobines.
Ces dernières sont vendues séparément (voir chapitre 6).
The following listed products are sold without coils, which are bought separately (refer to chapter 6).

Temps de réponse - Response times

| | Cde pneumatique <i>Pneumatic pilot</i> | Electropilote <i>Solenoid pilot</i> |
|---------------------------------|---|--|
| Monostable <i>Monostable</i> | TRA (14) : 24 ms TRR (12) : 43 ms | TRA (14) : 39 ms TRR (12) : 60 ms |
| Bistable <i>Bistable</i> | TRA (14) : 30 ms TRR (12) : 30 ms | TRA (14) : 90 ms TRR (12) : 90 ms |

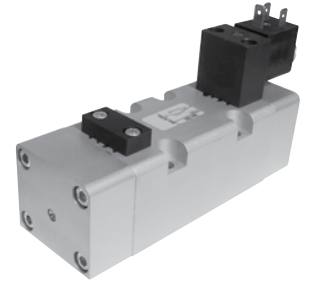
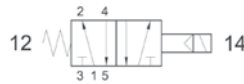


| | | | | |
|--|--|---|--|--|
| Diamètre nominal <i>Nominal orifice</i> | | 13 mm | | |
| Température de travail <i>Temperature range</i> | | max +60°C | | |
| Pression de travail <i>Working pressure</i> | al. interne monost. [<i>monost. internal air supply</i>] | al. interne bist. [<i>bistable internal air supply</i>] | al. séparée [<i>separate air supply</i>] | |
| | 2.5 ... 10 bar 0.25 ... 1 MPa | 1 ... 10 bar 0.1 ... 1 MPa | max 10 bar max 1 MPa | |
| Pression exercée (avec alim. séparée) <i>Actuating pressure (for separate air supply)</i> | | monostable [<i>monostable</i>] | bistable [<i>bistable</i>] | |
| | | 2.5 ... 10 bar 0.25 ... 1 MPa | 1 ... 10 bar 0.1 ... 1 MPa | |
| Fluide <i>Fluid</i> | | air filtré 50µ avec ou sans lubrification <i>50µ filtered lubricated or non lubricated air</i> | | |

352 ME

Électro distributeur ISO3 5/2 monostable
rappel ressort
5/2 solenoid pilot
spring return

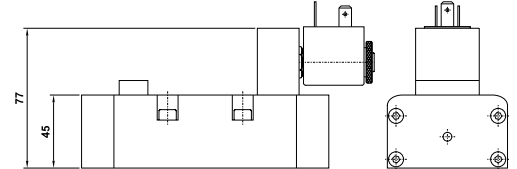
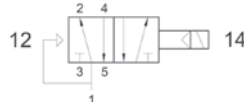
Version Atex 2GD T6 : 352ME.ATEX



352 EFP

Électro distributeur ISO3 5/2 monostable
rappel ressort pneumatique
5/2 solenoid pilot
pneumatic spring return

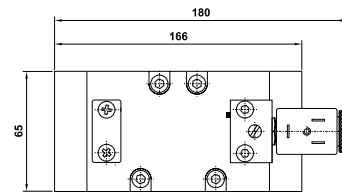
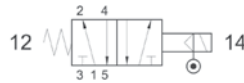
Version Atex 2GD T6 : 352EFP.ATEX



352 ME AS

Électro distributeur ISO3 5/2 monostable
rappel ressort
assistance pneumatique externe
5/2 solenoid pilot with separate air supply - spring return

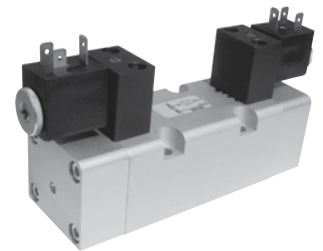
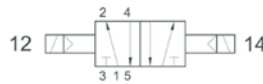
Version Atex 2GD T6 : 352MEAS.ATEX



352 EE

Électro distributeur ISO3 5/2 bistable
5/2 double solenoid pilot

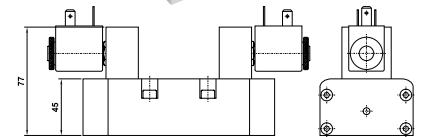
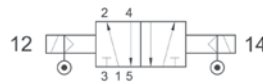
Version Atex 2GD T6 : 352EE.ATEX



352 EE AS

Électro distributeur ISO3 5/2 bistable
assistance pneumatique externe
5/2 double solenoid pilot with separate air supply

Version Atex 2GD T6 : 352EEAS.ATEX



353C EE

Centre fermé
Closed center

353A EE

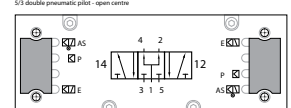
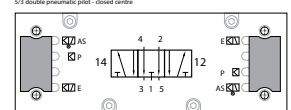
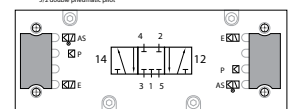
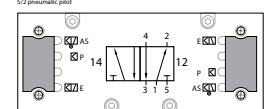
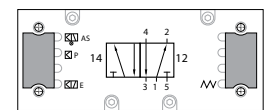
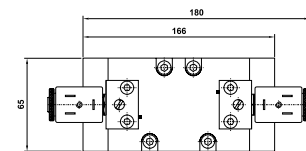
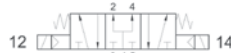
Centre ouvert
Open center

353P EE

Centre en pression
Pressurized center

Électro distributeur ISO3 5/3
5/3 double solenoid pilot

Version Atex 2GD T6 : 353*EE.ATEX



353C EE AS

Centre fermé
Closed center

353A EE AS

Centre ouvert
Open center

353P EE AS

Centre en pression
Pressurized center

Électro distributeur ISO3 5/3
assistance pneumatique externe
5/3 double solenoid pilot with separate air supply

Version Atex 2GD T6 : 353*EEAS.ATEX

