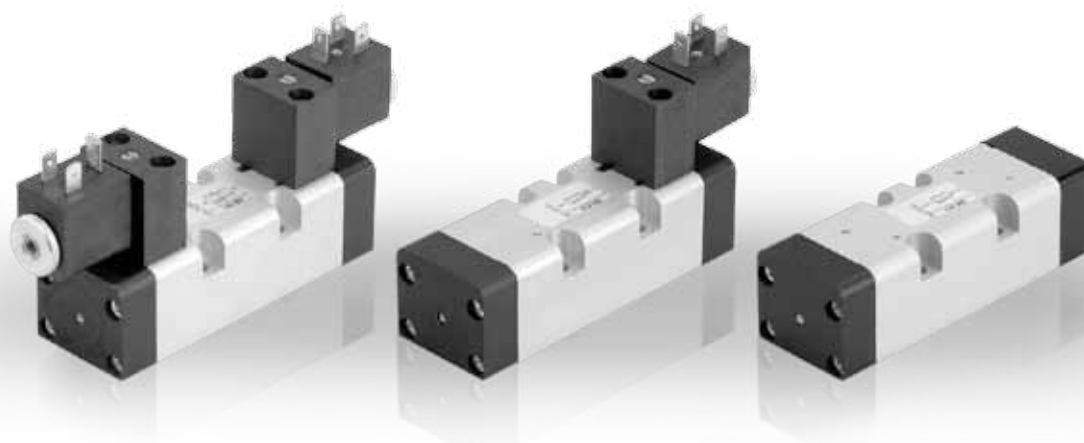


NORME ISO 5599/1

Electrodistributeur ISO 5599/1 taille 1

ISO 5599/1 valves & solenoid valves size 1



INFORMATIONS GÉNÉRALES GENERAL INFORMATION

- Distributeurs 5/2 - 5/3
5/2 - 5/3 spool valves
- Montage sur embase modulaire ou monobloc
Installation on manifolds or multiple sub-bases
- Commande manuelle bistable sur l'électropilote
Detented manual override on the solenoid pilot

Matériaux

Corps : Aluminium anodisé
Ressorts : Inox
Joints : NBR
Tiroir : Aluminium nickelé
Parties internes : Laiton OT58

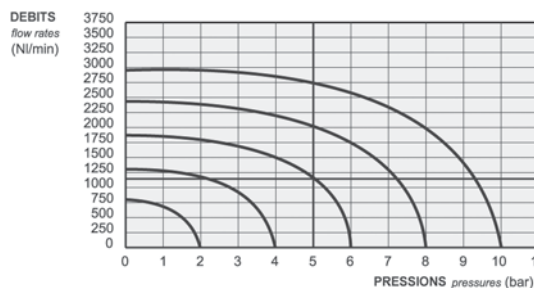
Materials

Body : Aluminium 11S
Springs : Stainless steel
Seals : NBR
Spool : Nickel plated aluminium
Internal parts : Brass OT58

Les produits de cette série sont vendus sans bobines.
Ces dernières sont vendues séparément (voir chapitre 5).
The following listed products are sold without coils, which are
bought separately (refer to chapter 5).

Temps de réponse - Response times

	Cde pneumatique Pneumatic pilot	Electropilote Solenoid pilot
Monostable Monostable	TRA (14) : 12 ms TRR (12) : 30 ms	TRA (14) : 24 ms TRR (12) : 50 ms
Bistable Bistable	TRA (14) : 20 ms TRR (12) : 20 ms	TRA (14) : 80 ms TRR (12) : 80 ms

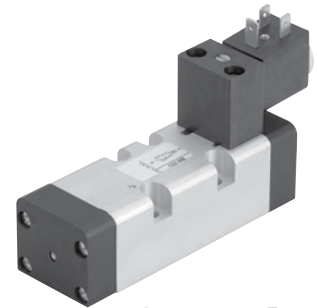
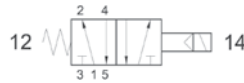


Diamètre nominal Nominal orifice	7,5 mm		
Température de travail Temperature range	max +60°C		
Pression de travail Working pressure	al. interne monost. [monost. internal air supply]	al. interne bist. [bistable internal air supply]	al. séparée [separate air supply]
	2.5 ... 10 bar 0.25 ... 1 MPa	1 ... 10 bar 0.1 ... 1 MPa	max 10 bar max 1 MPa
Pression exercée (avec alim. séparée) Actuating pressure (for separate air supply)	monostable [monostable]		bistable [bistable]
	2.5 ... 10 bar 0.25 ... 1 MPa		1 ... 10 bar 0.1 ... 1 MPa
Fluide Fluid	air filtré 50µ avec ou sans lubrification 50µ filtered lubricated or non lubricated air		

152 ME

Électro distributeur ISO1 5/2 monostable
rappel ressort mécanique
5/2 solenoid pilot
spring return

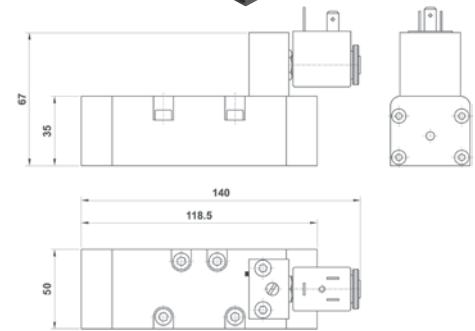
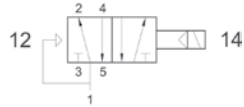
Version Atex 2GD T6 : 152ME.ATEX



152 EFP

Électro distributeur ISO1 5/2 monostable
rappel ressort pneumatique
5/2 solenoid pilot
pneumatic spring return

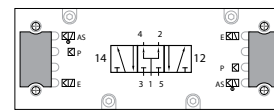
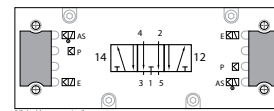
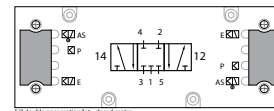
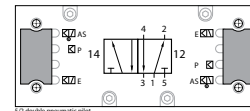
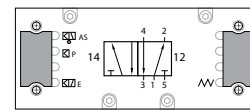
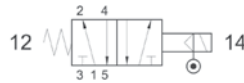
Version Atex 2GD T6 : 152EFP.ATEX



152 ME AS

Électro distributeur ISO1 5/2 monostable
assistance pneumatique externe
rappel ressort mécanique
5/2 solenoid pilot with separate air supply - spring return

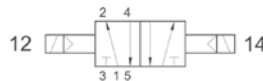
Version Atex 2GD T6 : 152MEAS.ATEX



152 EE

Électro distributeur ISO1 5/2 bistable
5/2 double solenoid pilot

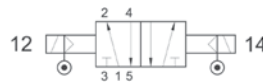
Version Atex 2GD T6 : 152EE.ATEX



152 EE AS

Électro distributeur ISO1 5/2 bistable
assistance pneumatique externe
5/2 double solenoid pilot with separate air supply

Version Atex 2GD T6 : 152EEAS.ATEX



153C EE

Centre fermé
Closed center



153A EE

Centre ouvert
Open center



153P EE

Centre en pression
Pressurized center



Électro distributeur ISO1 5/3
rappel ressort mécanique
5/3 double solenoid pilot - spring return

Version Atex 2GD T6 : 153*EE.ATEX

153C EE AS

Centre fermé
Closed center



153A EE AS

Centre ouvert
Open center



153P EE AS

Centre en pression
Pressurized center



Électro distributeur ISO1 5/3
assistance pneumatique externe
rappel ressort mécanique
5/3 double solenoid pilot with separate air supply - spring return

Version Atex 2GD T6 : 153*EEAS.ATEX

