

GAMME STANDARD

Distributeurs commande pneumatique |

Pneumatically piloted valves



INFORMATIONS GÉNÉRALES GENERAL INFORMATION

- Distributeurs 3/2 - 5/2 - 5/3 avec raccordements G1/8" - G1/4" - G3/8" - G1/2"
3/2 - 5/2 - 5/3 spool valves with G1/8" - G1/4" - G3/8" G1/2", threaded ports
- Montage en ligne, sur embases multiples ou monobloc (Voir embases p.136 à 141)
Installation in-line, gang or manifold mounted
- Large gamme de pilotages
Comprehensive range of actuations
- Versions avec fonctions logiques intégrées
Versions with integrated logic element
- Distributeurs spéciaux sur demande
Special versions on request

Matériaux

Corps : Aluminium anodisé
Ressort : Inox
Joints : NBR
Tiroir : Aluminium nickelé
Parties internes : Laiton OT58

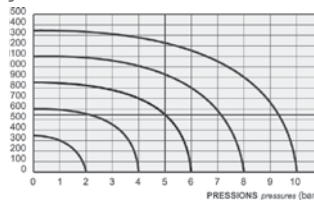
Materials

Body : Aluminium 11S
Springs : Stainless steel
Seals : NBR
Spool : Nickel plated aluminium
Internal parts : Brass OT58

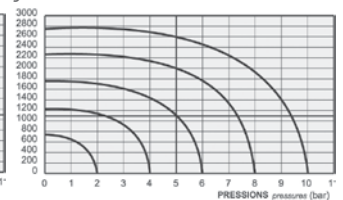
Débit nominal à 6 bar

G1/8" : 550 NL/min G1/4" : 1100 NL/min
G3/8" : 2250 NL/min G1/2" : 4600 NL/min

Débit (NL/min) - G1/8" flow rates



Débit (NL/min) - G1/4" flow rates



	G1/8"	G1/4"	G1/2"
Monostable Monostable	TRA (14) : 6 ms TRR (12) : 15 ms	TRA (14) : 7 ms TRR (12) : 15 ms	TRA (14) : 4 ms TRR (12) : 8 ms
Bistable Bistable	TRA (14) : 7 ms TRR (12) : 7 ms	TRA (14) : 7 ms TRR (12) : 7 ms	TRA (14) : 4 ms TRR (12) : 4 ms

Diamètre nominal Nominal orifice	G1/8" : 5 mm - G1/4" : 7.5 mm G3/8" : 10mm - G1/2" : 13mm	
Température de travail Temperature range	max +60°C	
Pression de travail Working pressure	max 10 bar max 1 MPa	
Pression de commande Actuating pressure	monostable [monostable]	bistable [bistable]
	2.5 ... 10 bar 0.25 ... 1 MPa	1 ... 10 bar 0.1 ... 1 MPa
Fluide Fluid	air filtré 50µ avec ou sans lubrification 50µ filtered lubricated or non lubricated air	

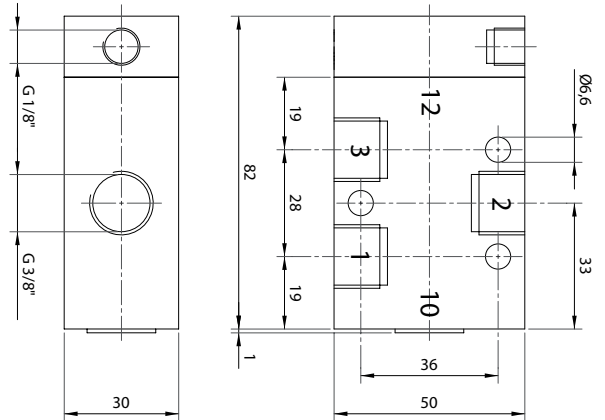
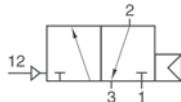
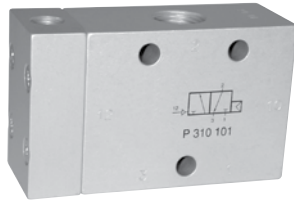
GAMME STANDARD

Distributeurs commande pneumatique G3/8" |

Pneumatically piloted valves

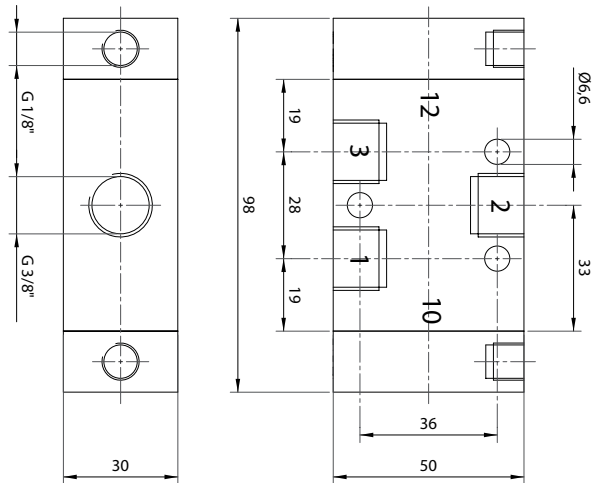
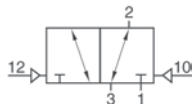
P 310 101

Distributeur 3/2 NF monostable
commande pneumatique
rappel ressort pneumatique
raccordement G3/8"
*3/2 pneumatically way valve
with air-spring - G3/8"*



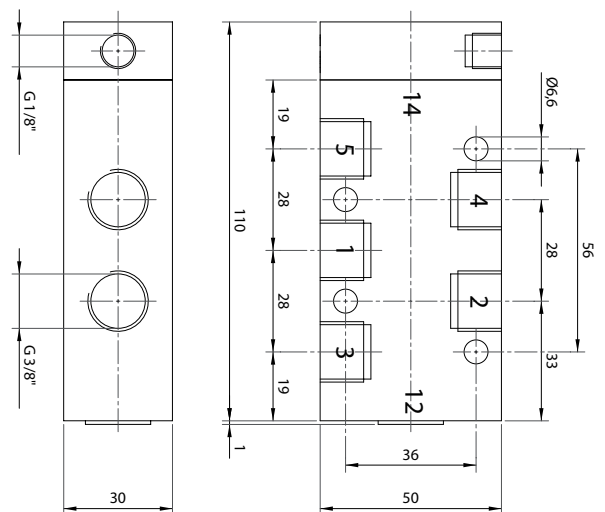
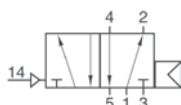
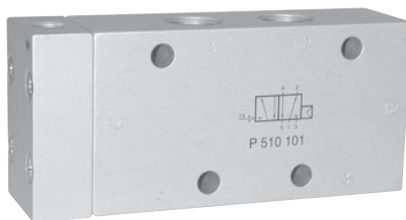
P 320 101

Distributeur 3/2 bistable
commande pneumatique
raccordement G3/8"
3/2 pneumatically way valve - G3/8"



P 510 101

Distributeur 5/2 monostable
commande pneumatique
rappel ressort pneumatique
raccordement G3/8"
*5/2 pneumatically way valve
with air-spring - G3/8"*



GAMME STANDARD

Distributeurs commande pneumatique G1/2" |

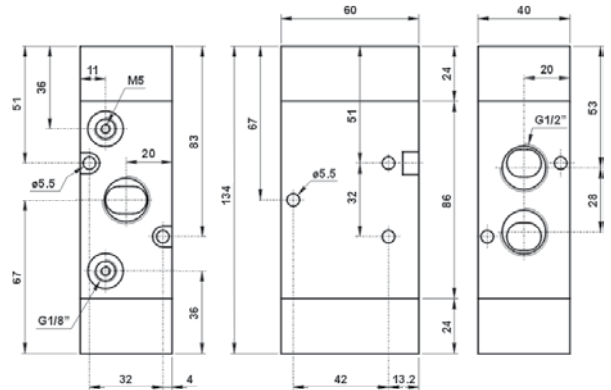
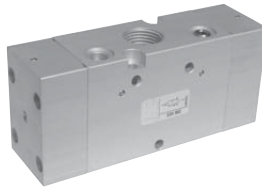
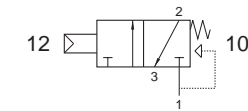
Pneumatically piloted valves

324 MC

Distributeur 3/2 NF monostable
commande pneumatique
rappel ressort
raccordement G1/2"

*3/2 NC pneumatic pilot
spring return - G1/2"*

Version Atex 2GD T6 : 324MC.ATEX

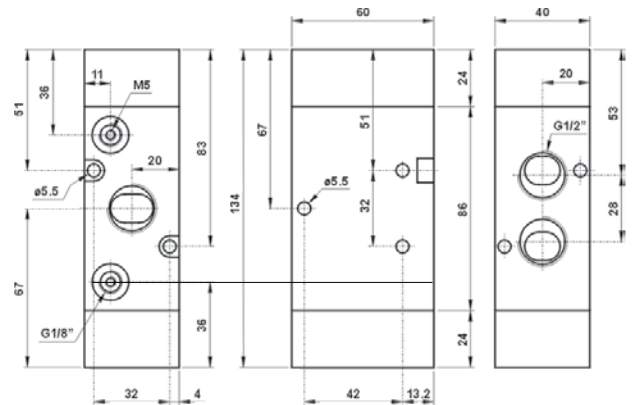
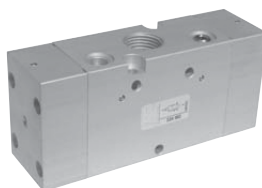
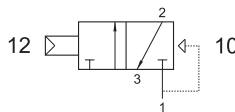


324 CFP

Distributeur 3/2 NF monostable
commande pneumatique
rappel ressort pneumatique
raccordement G1/2"

*3/2 NC pneumatic pilot
pneumatic spring return - G1/2"*

Version Atex 2GD T6 : 324CFP.ATEX

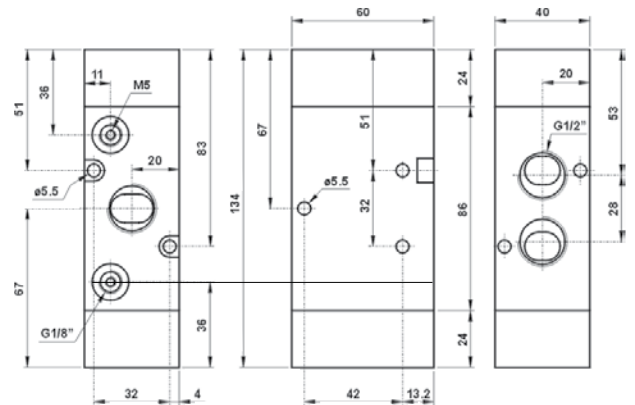
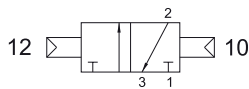


324 CC

Distributeur 3/2 bistable
commande pneumatique
raccordement G1/2"

3/2 double pneumatic pilot - G1/2"

Version Atex 2GD T6 : 324CC.ATEX

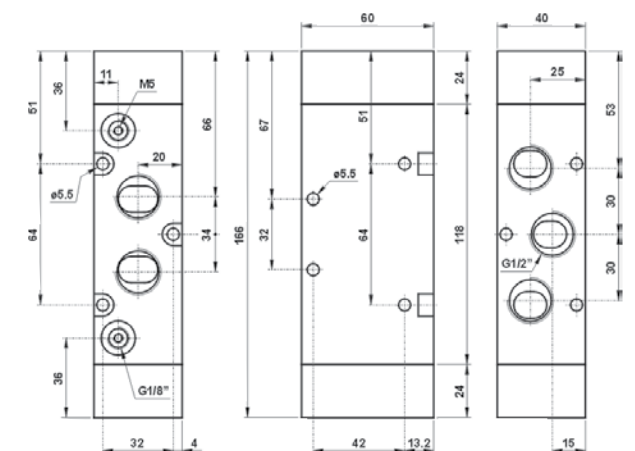
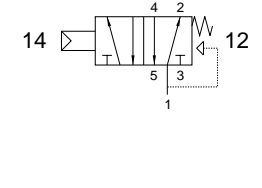
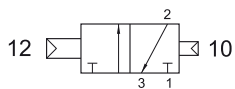


324 CCD

Distributeur 3/2 bistable différentiel
commande pneumatique
raccordement G1/2"

*3/2 double pneumatic pilot
with differential - G1/2"*

Version Atex 2GD T6 : 324CCD.ATEX

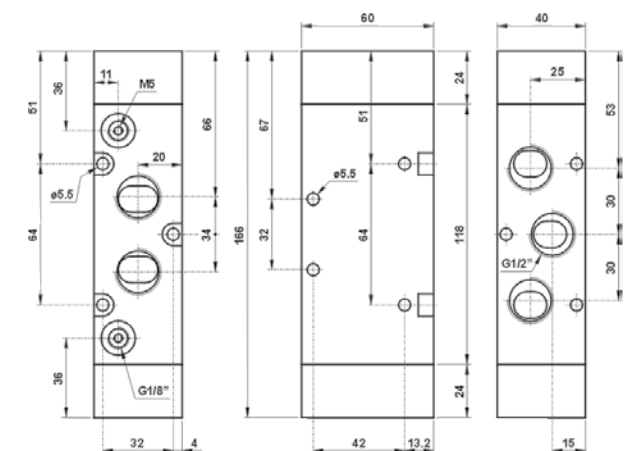
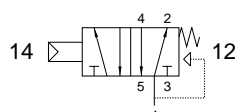


524 MC

Distributeur 5/2 monostable
commande pneumatique
rappel ressort
raccordement G1/2"

*5/2 pneumatic pilot
spring return - G1/2"*

Version Atex 2GD T6 : 524MC.ATEX

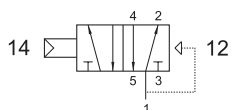


524 CFP

Distributeur 5/2 monostable
commande pneumatique
rappel ressort pneumatique
raccordement G 1/2"

*5/2 pneumatic pilot
pneumatic spring return - G1/2"*

Version Atex 2GD T6 : 524CFP.ATEX



GAMME STANDARD

Distributeurs commande pneumatique G1/2" |

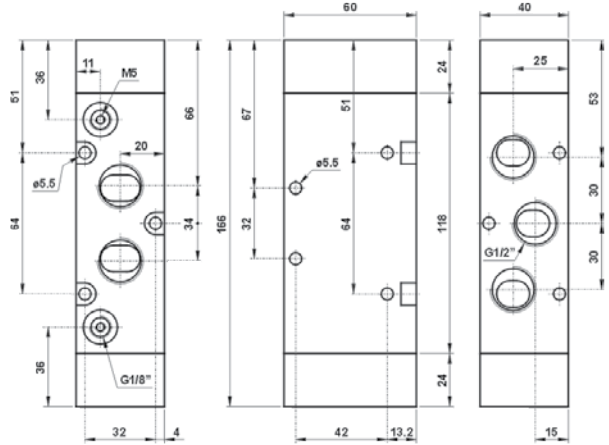
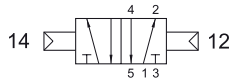
Pneumatically piloted valves

524 CC

Distributeur 5/2 bistable
commande pneumatique
raccordement G1/2"

5/2 double pneumatic pilot - G1/2"

Version Atex 2GD T6 : 524CC.ATEX

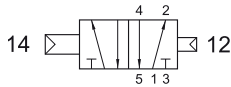


524 CCD

Distributeur 5/2 bistable différentiel
commande pneumatique
raccordement G1/2"

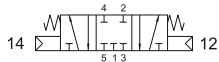
*5/2 double pneumatic pilot
with differential - G1/2"*

Version Atex 2GD T6 : 524CCD.ATEX



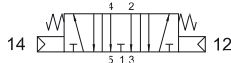
5243C CC

Centre fermé
Closed center



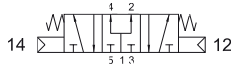
5243A CC

Centre ouvert
Open center



5243P CC

Centre en pression
Pressurized center



Distributeur 5/3

commande pneumatique
raccordement G1/2"

5/3 double pneumatic pilot - G1/2"

Version Atex 2GD T6 : 5243*CC.ATEX

