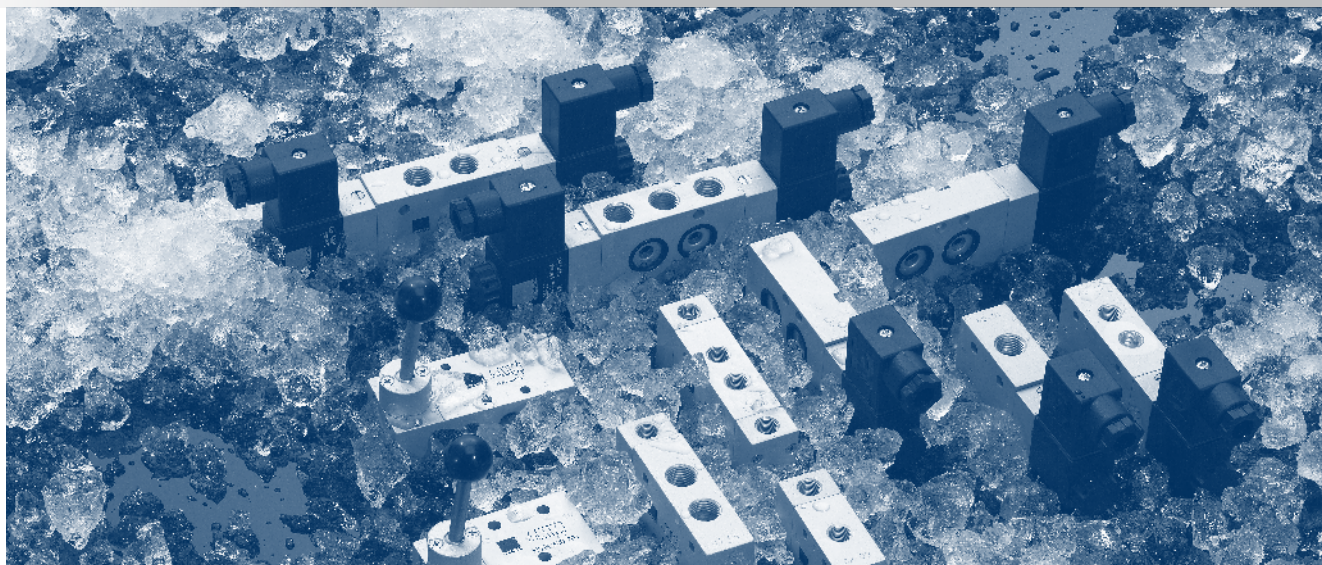


# GAMME GRAND FROID -50°C à 50°C

## Distributeurs commande manuelle | *Manually actuated valves*



### INFORMATIONS GÉNÉRALES *GENERAL INFORMATION*

Lorsque le distributeur est utilisé en dessous de 0°C la pression doit être d'au moins 15°C inférieure à la température de l'environnement.

L'air doit être parfaitement sec !

En dessous de -40°C, il faut prévoir une diminution de débit de 10 cm<sup>3</sup>/min.

Utilisez de l'air non lubrifié.

*When operated below 0° C the pressure condensation point has to be at least 15° C below the temperature of environment and media. Air has to be dried !*

*Below - 40° C the leakage-rate of the valve can increase to 10 cm<sup>3</sup> /min.*

*Use unlubricated air only.*

#### **Matériaux**

Corps : Aluminium anodisé

Ressorts : Inox

Joints : NBR

Tiroir : Aluminium nickelé

Parties internes : Laiton OT58

#### **Materials**

*Body : Aluminium 11S*

*Springs : Stainless steel*

*Seals : NBR*

*Spool : Nickel plated aluminium*

*Internal parts : Brass OT58*

Diamètre nominal <i>Nominal orifice</i>	G1/8" : 650 l/mn	G1/4" : 1250 l/mn
Température de travail <i>Temperature range</i>	-50°C à 50°C	
Pression de travail <i>Working pressure</i>	max 10 bar <i>max 1 MPa</i>	
Fluide <i>Fluid</i>	air parfaitement sec <i>perfectly dry air</i>	

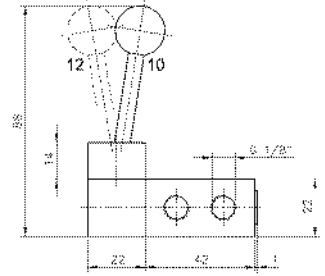
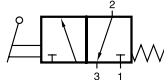
# GAMME GRAND FROID -50°C à 50°C

## Distributeurs commande manuelle G1/8" | Manually actuated valves

### HV 311 501 TT

Distributeur 3/2 NF à levier monostable  
rappel ressort mécanique  
raccordement G1/8"  
3/2 NC lever actuated valve  
spring return  
G1/8"

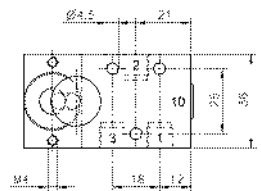
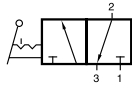
650l/min - 1-10 bar



### HVR 320 501 TT

Distributeur 3/2 NF à levier bistable  
raccordement G1/8"  
3/2 NC bistable lever actuated valve  
G1/8"

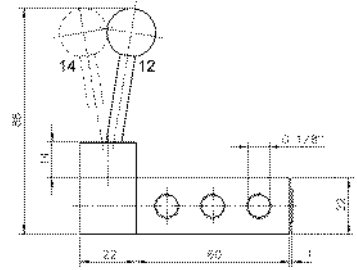
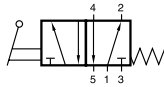
650l/min - 1-10 bar



### HV 511 501 TT

Distributeur 5/2 à levier monostable  
rappel ressort mécanique  
raccordement G1/8"  
5/2 NC lever actuated valve  
spring return  
G1/8"

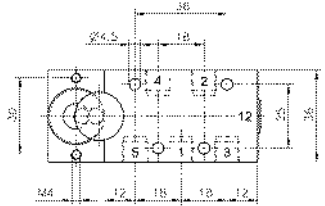
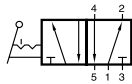
650l/min - 1-10 bar



### HVR 520 501 TT

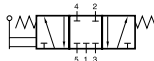
Distributeur 5/2 à levier bistable  
raccordement G1/8"  
5/2 NC bistable lever actuated valve  
G1/8"

650l/min - 1-10 bar



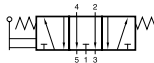
### HV 531 501 TT

Centre fermé  
Closed center



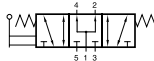
### HV 532 501 TT

Centre ouvert  
Open center



### HV 533 501 TT

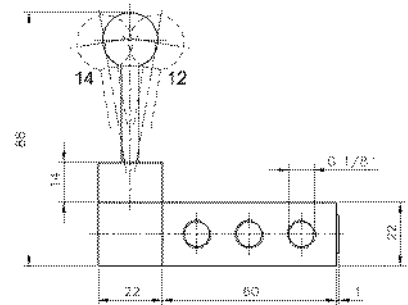
Centre en pression  
Pressurized center



Distributeur 5/3 à levier  
rappel ressort mécanique au centre  
raccordement G1/8"

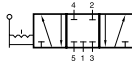
5/3 lever actuated valve - spring return to middle position - G1/8"

650l/min - 1-10 bar



### HVR 531 501 TT

Centre fermé  
Closed center



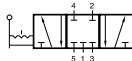
### HVR 532 501 TT

Centre ouvert  
Open center



### HVR 533 501 TT

Centre en pression  
Pressurized center



Distributeur 5/3 à levier

3 positions stables  
raccordement G1/8"

5/3 lever actuated valve indexed - G1/8"

650l/min - 1-10 bar

