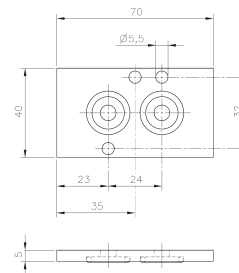
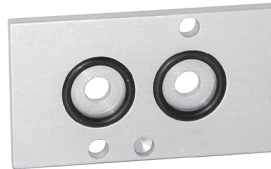


GAMME NAMUR

Accessoires Namur | Accessories for Namur valves

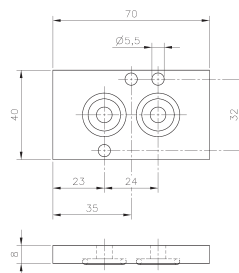
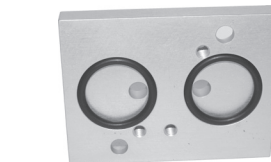
ZPN 5

Adaptateur aluminium anodisé
5 mm d'épaisseur pour assembler une bobine 30 mm
sur un distributeur Namur G1/4" 22mm
*Intermediate plate, made from anodised aluminum
5 mm thick to be used in case a 30 mm wide coil is to
be assembled to a 22 mm wide G1/4" Namurvalve*



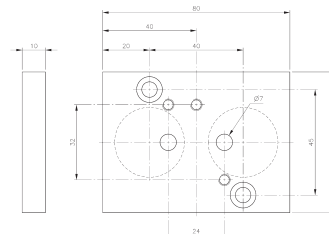
ZPN 8

Adaptateur aluminium anodisé
8 mm d'épaisseur pour assembler une bobine 36 mm
sur un distributeur Namur G1/4" 22mm
*Intermediate plate, made from anodised aluminum
5 mm thick to be used in case a 30 mm wide coil is to
be assembled to a 22 mm wide G1/4" Namurvalve*



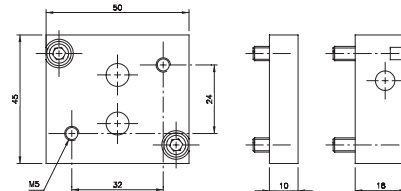
ZPN 6-10

Adaptateur pour transformer un distributeur G1/2"
en G1/4"
Adapter-plate G 1/2" actuator to G 1/4" valve



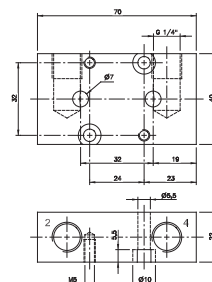
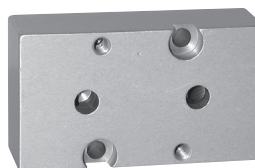
ZPN 701-90

Adaptateur pour orientation à 90°
*Plate to rotate a Namur-valve on the actuator by 90°.
Orifice 7 mm assures full flow!*



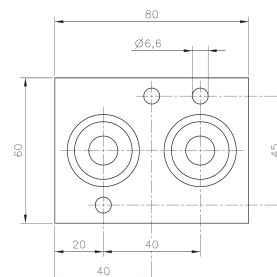
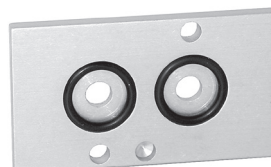
FPNW 22-1/4

Adaptateur Namur à raccordement direct
raccordement G1/4"
*Plate to convert a Namurvalve into an inline
valve 22-G1/4"*



ZPN 6-5

Adaptateur aluminium anodisé
5 mm d'épaisseur pour assembler une bobine 36 mm
sur un distributeur Namur G1/2" 30 mm
*Intermediate plate, made from anodised aluminum
5 mm thick to be used in case a 36 mm wide coil is to
be assembled to a 22 mm wide G1/2" Namurvalve*



Réhausseur pour bobine & bobine Atex 30 mm

Adapter for 30 mm coil

Adaptateur à monter sous un distributeur Namur pour le surélever afin de positionner une bobine 30 mm.

Adapter for mounting in a dispenser to elevate Namur for positioning a spool 30 mm

CODE DE COMMANDE - ORDER CODE

01.055.2

